



Inspire - Respiratory Critical Care

Monthly Newsletter

September 2024

Welcome to our FIRST monthly newsletter. This newsletter will contain links to many of the articles that we shared during the previous month, and noteworthy events that we deem significant. We will also include reminders of upcoming events and anything that we might find interesting.

Remember, many of these things can also be found on our website at **www.inspire-rt.com**

Our August “Ask and Expert” panel discussion was held on August 9th and was titled “Optimizing Management of the Lung Donor and Recipient”. During this discussion, many aspects were covered including ventilator management of the donor and the recipient. Strategies to enhance organ recovery like EVLP and ECMO were also discussed by our panel of experts. The entire recording can be found **here**.

Lightning Rounds with Keith were initiated and include three very short overviews of important topics in respiratory critical care. They can be found by following these three links.

The Cuff Leak Test

High Flow Nasal Cannula

Patient Self-Inflicted Lung Injury (P-SILI)

Articles of note that were shared in August

Respiratory Therapist-Driven Mechanical Ventilation Protocol Is Associated with Increased Lung Protective Ventilation

Alaina C Berg, Erin Evans, Uche E Okoro, Vivian Pham, Tyler M Foley, Chloe Hlas, Justin D Kuhn, Boulos Nassar, Brian M Fuller, Nicholas M Mohr *Respiratory Care* Sep 2024, 69 (9) 1071-1080; DOI: 10.4187/respcare.11599

Using the ROX Index to Predict Treatment Outcome for High-Flow Nasal Cannula and/or Noninvasive Ventilation in Patients with COPD Exacerbations

Brett Z Schaeffer, Sarina A Fazio, Jacqueline C Stocking, Jason Y Adams, Anna Liu, Hugh B Black, Richard W Harper, Irene Cortes-Puch, Timothy E Albertson, Brooks T Kuhn *Respiratory Care* Sep 2024, 69 (9) 1100-1107; DOI: 10.4187/respcare.11544

Albuterol Delivery via In-Line Intrapulmonary Percussive Ventilation Superimposed on Invasive Ventilation in an Adult Lung Model

Takashi Karashima, Yuka Mimura-Kimura, Yusuke Mimura *Respiratory Care* Sep 2024, 69 (9) 1092-1099; DOI: 10.4187/respcare.11249

Patient Self-Inflicted Lung Injury-A Narrative Review of Pathophysiology, Early Recognition, and Management Options

Sklienka P, Frelich M, Burša F. Patient Self-Inflicted Lung Injury-A Narrative Review of Pathophysiology, Early Recognition, and Management Options. *J Pers Med.* 2023 Mar 28;13(4):593. doi: 10.3390/jpm13040593. PMID: 37108979; PMCID: PMC10146629.

Patient self-inflicted lung injury and positive end-expiratory pressure for safe spontaneous breathing

Yoshida T, Grieco DL, Brochard L, Fujino Y. Patient self-inflicted lung injury and positive end-expiratory pressure for safe spontaneous breathing. *Curr Opin Crit Care*. 2020 Feb;26(1):59-65. doi: 10.1097/MCC.0000000000000691. PMID: 31815775.

Patient self-inflicted lung injury: implications for acute hypoxemic respiratory failure and ARDS patients on non-invasive support

Grieco DL, Menga LS, Eleuteri D, Antonelli M. Patient self-inflicted lung injury: implications for acute hypoxemic respiratory failure and ARDS patients on non-invasive support. *Minerva Anestesiol*. 2019 Sep;85(9):1014-1023. doi: 10.23736/S0375-9393.19.13418-9. Epub 2019 Mar 12. PMID: 30871304

Patient-Self Inflicted Lung Injury: A Practical Review

Carteaux G, Parfait M, Combet M, Haudebourg AF, Tuffet S, Mekontso Dessap A. Patient-Self Inflicted Lung Injury: A Practical Review. *J Clin Med*. 2021 Jun 21;10(12):2738. doi: 10.3390/jcm10122738. PMID: 34205783; PMCID: PMC8234933.

Upcoming events

Sign up for our September “Ask an Expert” panel discussion on “Patient Self Inflicted Lung Injury” Sign up **here**.



AARC Congress 2024



See the program and sign up **here**.

Resources

American Association for Respiratory Care (AARC)

National Board for Respiratory Care (NBRC)

Commission on the Accreditation of Respiratory Care (COARC)

Society of Critical Care Medicine (SCCM)

American College of Chest Physicians (CHEST)

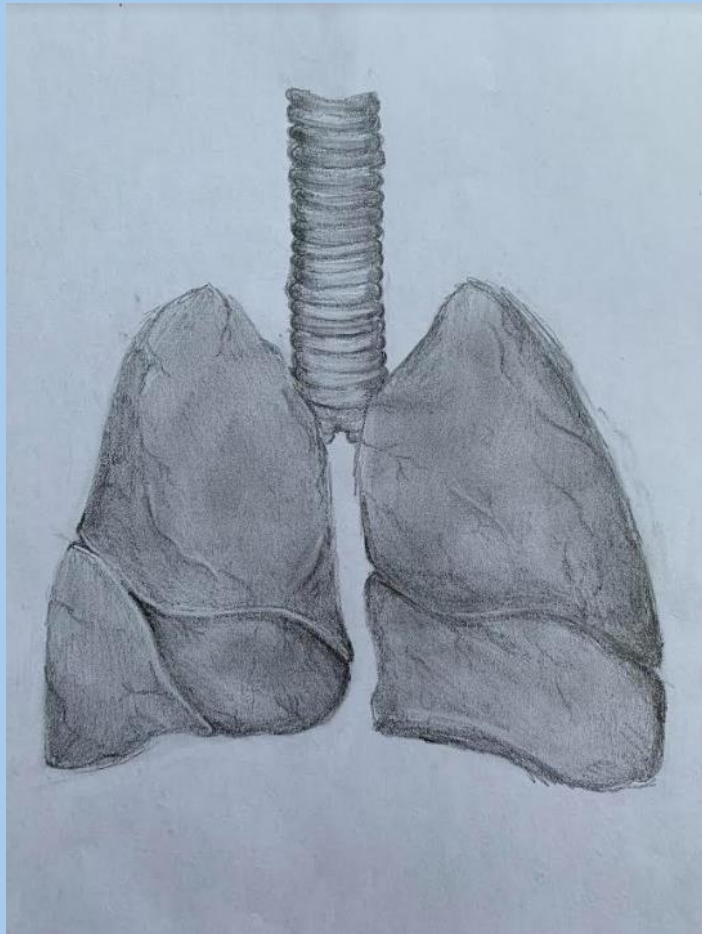
European Society of Intensive Care Medicine (ESICM)

American Thoracic Society (ATS)

Look out for our daily pearls, case reports and images on LinkedIn. Follow me **here**.

Find all our videos, RT CIMS, Lightning Rounds and Expert Panel Discussions **here**.

Finally, please reach out to us with recommendations for future content that you would like to see. Contact us **here**.



Artwork by Angelina Lamb